

**RPL9 Antibody (monoclonal) (M01)****Mouse monoclonal antibody raised against a partial recombinant RPL9.****Catalog # AT3710a****Specification**

---

**RPL9 Antibody (monoclonal) (M01) - Product Information**

Application	WB, IHC, IF, E
Primary Accession	<a href="#">P32969</a>
Other Accession	<a href="#">NM_000661</a>
Reactivity	Human
Host	mouse
Clonality	Monoclonal
Isotype	IgG1 Kappa
Calculated MW	21863

**RPL9 Antibody (monoclonal) (M01) - Additional Information****Gene ID** 6133**Other Names**

60S ribosomal protein L9, RPL9

**Target/Specificity**

RPL9 (NP\_000652, 93 a.a. ~ 191 a.a) partial recombinant protein with GST tag. MW of the GST tag alone is 26 KDa.

**Dilution**

WB~~1:500~1000

IHC~~1:100~500

IF~~1:50~200

E~~N/A

**Format**

Clear, colorless solution in phosphate buffered saline, pH 7.2 .

**Storage**

Store at -20°C or lower. Aliquot to avoid repeated freezing and thawing.

**Precautions**

RPL9 Antibody (monoclonal) (M01) is for research use only and not for use in diagnostic or therapeutic procedures.

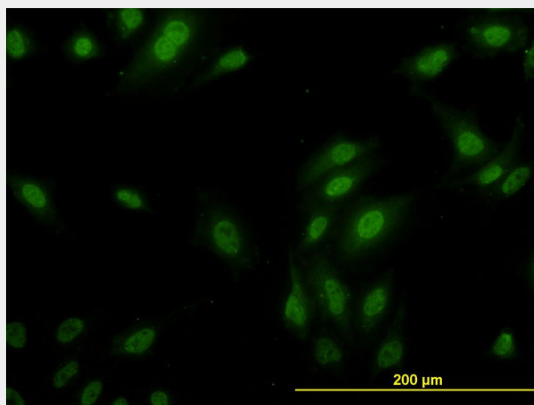
**RPL9 Antibody (monoclonal) (M01) - Protocols**

Provided below are standard protocols that you may find useful for product applications.

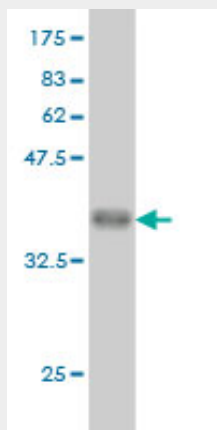
- [Western Blot](#)

- [Blocking Peptides](#)
- [Dot Blot](#)
- [Immunohistochemistry](#)
- [Immunofluorescence](#)
- [Immunoprecipitation](#)
- [Flow Cytometry](#)
- [Cell Culture](#)

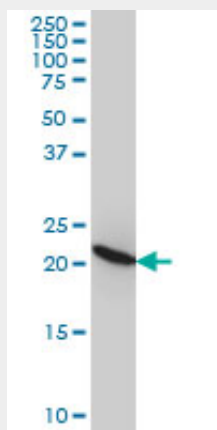
## RPL9 Antibody (monoclonal) (M01) - Images



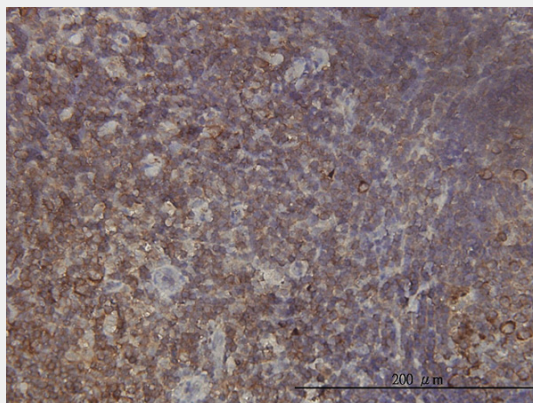
Immunofluorescence of monoclonal antibody to RPL9 on HeLa cell. [antibody concentration 10 ug/ml]



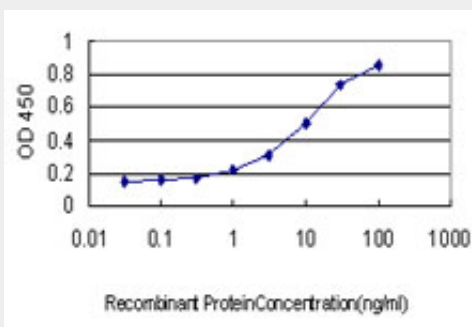
Antibody Reactive Against Recombinant Protein. Western Blot detection against Immunogen (36.63 KDa) .



RPL9 monoclonal antibody (M01), clone 2F11 Western Blot analysis of RPL9 expression in HeLa (Cat # AT3710a )



Immunoperoxidase of monoclonal antibody to RPL9 on formalin-fixed paraffin-embedded human tonsil tissue. [antibody concentration 1 ~ 10 ug/ml]



Detection limit for recombinant GST tagged RPL9 is approximately 0.3ng/ml as a capture antibody.

### RPL9 Antibody (monoclonal) (M01) - Background

Ribosomes, the organelles that catalyze protein synthesis, consist of a small 40S subunit and a large 60S subunit. Together these subunits are composed of 4 RNA species and approximately 80 structurally distinct proteins. This gene encodes a ribosomal protein that is a component of the 60S subunit. The protein belongs to the L6P family of ribosomal proteins. It is located in the cytoplasm. As is typical for genes encoding ribosomal proteins, there are multiple processed pseudogenes of this gene dispersed through the genome. Two alternatively spliced transcript variants encoding the same protein have been found for this gene.

### RPL9 Antibody (monoclonal) (M01) - References

1. Proteomic characterization of the human sperm nucleus. de Mateo S, Castillo J, Estanyol JM, Ballesca JL, Oliva R. PROTEOMICS DOI: 10.1002/ pmic.201000799